

LITHIUM IRON PHOSPHATE BATTERY

ELECTRICAL SPECIFICATIONS

Nominal Voltage	12.8 V
Nominal Capacity	100 Ah
Capacity @ 0.2C	>290 min
Energy	1280Wh
Resistance	<20 mΩ
Efficiency	99%
Self Discharge	<3% per Month
Maximum Modules in Series	4
Maximum Modules in Parallel	No limited

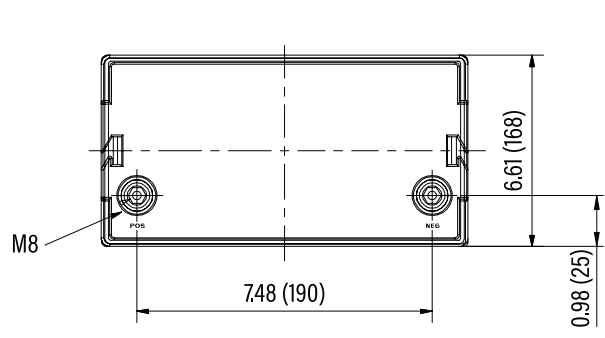
DISCHARGE SPECIFICATIONS

Maximum Continuous Discharge Current	100 A
Peak Discharge Current	450 A
Recommended Low Voltage Disconnect	11 V
PCM Discharge Voltage Cut-Off	10 V
Reconnect Voltage	12 V
Short Circuit Protection	Yes

TEMPERATURE SPECIFICATIONS

Discharge Temperature	-4 to 140 °F (-20 to 60 °C)
Charge Temperature	 -4 to 140 °F (-20 to 60 °C)
Storage Temperature	-4 to 140 °F (-20 to 60 °C)
PCM High Temperature Cut-Off	176 °F (80 °C)

DIMENSIONAL SPECIFICATIONS



MECHANICAL SPECIFICATIONS

Dimensions (L x W x H)	260 x 168 x 218 mm
Weight	10.8 kg
Terminal Type	M8
Case Material	ABS
Enclosure Protection	IP44
Chemistry	LiFePO ₄

CHARGE SPECIFICATIONS

Recommended Charge Current	< 30 A
Maximum Charge Current	50A
Recommended Charge Voltage	14.2 V - 14.6 V
PCM Charge Voltage Cut-off	14.6V
Reconnect Voltage	14.0 V
Active Balance Current:	3.4V per cell and 30mV cell gap

BATTERY FUNCTIONS

Bluetooth	Yes
Active Cell balance	Yes
Heater	Yes
Victron CAN and NMEA2000	Yes

